

MONTHLY MEMBERSHIP PROGRESS REPORT

District 3233 C

Results as of: 2/29/2024

GMT:

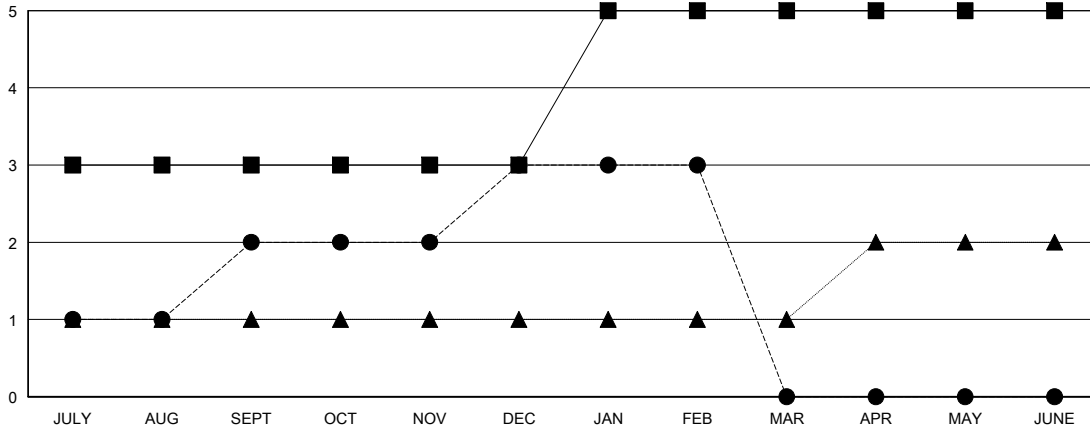
LOCATION INDIA

GMT CA

Clubs			
RESULTS FOR 2023-2024			
QUARTER	NEW CLUB GOAL	NEW CLUBS	DROPPED CLUBS
JULY/AUG/SEPT	3	2	2
OCT/NOV/DEC	0	1	2
JAN/FEB/MAR	2	0	1
APR/MAY/JUNE	0	0	0

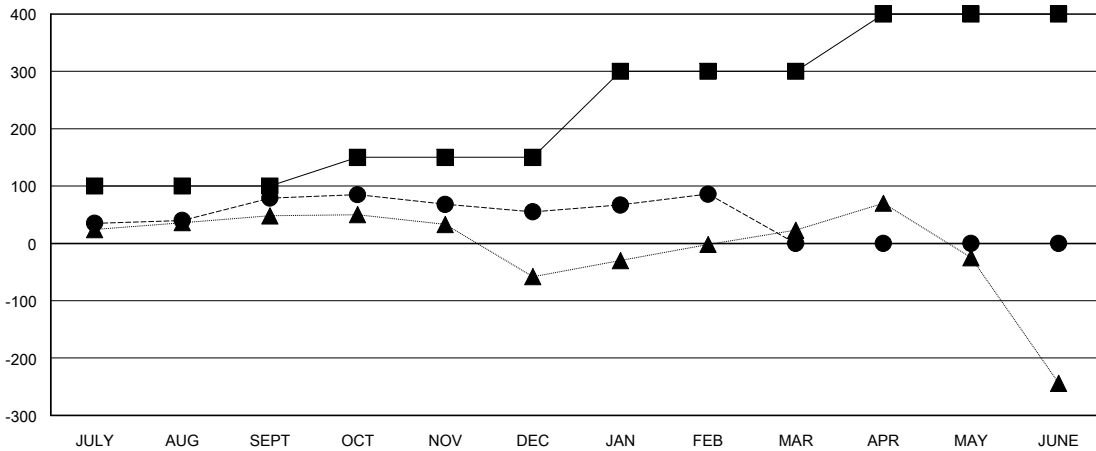
Members			
RESULTS FOR 2023-2024			
QUARTER	MEMBER GROWTH NET GOAL	MEMBER GROWTH ACTUAL	DROPPED MEMBERS ACTUAL (including transfers)
JULY/AUG/SEPT	100	144	54
OCT/NOV/DEC	50	50	73
JAN/FEB/MAR	150	67	35
APR/MAY/JUNE	100	0	0

GOALS AND ACTUAL NEW CLUBS CUMULATIVE



- - CURRENT YEAR GOALS FOR NEW CLUBS
- - CURRENT YEAR ACTUAL NEW CLUBS
- ▲ - LAST YEAR ACTUAL NEW CLUBS

GOALS AND ACTUAL MEMBERS CUMULATIVE



- - MEMBER GROWTH NET GOAL
- - MEMBER GROWTH ACTUAL
- ▲ - LAST YEAR MEMBERSHIP ACTUAL

DROPPED CLUBS: 5	56 CLUBS OF 127 ADDED 1 OR MORE NEW MEMBERS	GENDER DISTRIBUTION
		MALE 1,905 (65.96%)
		FEMALE 981 (33.97%)
DROPPED MEMBERS	CLICK HERE FOR CUMULATIVE MEMBERSHIP DATA	TOTAL FAMILY UNIT MEMBERS 1,040
DECEASED 7		FAMILY MEMBERS PAYING HALF DUES 578
CLUB CANCELLED 64		
OTHER 91		
TOTAL 162		